

Figure 1

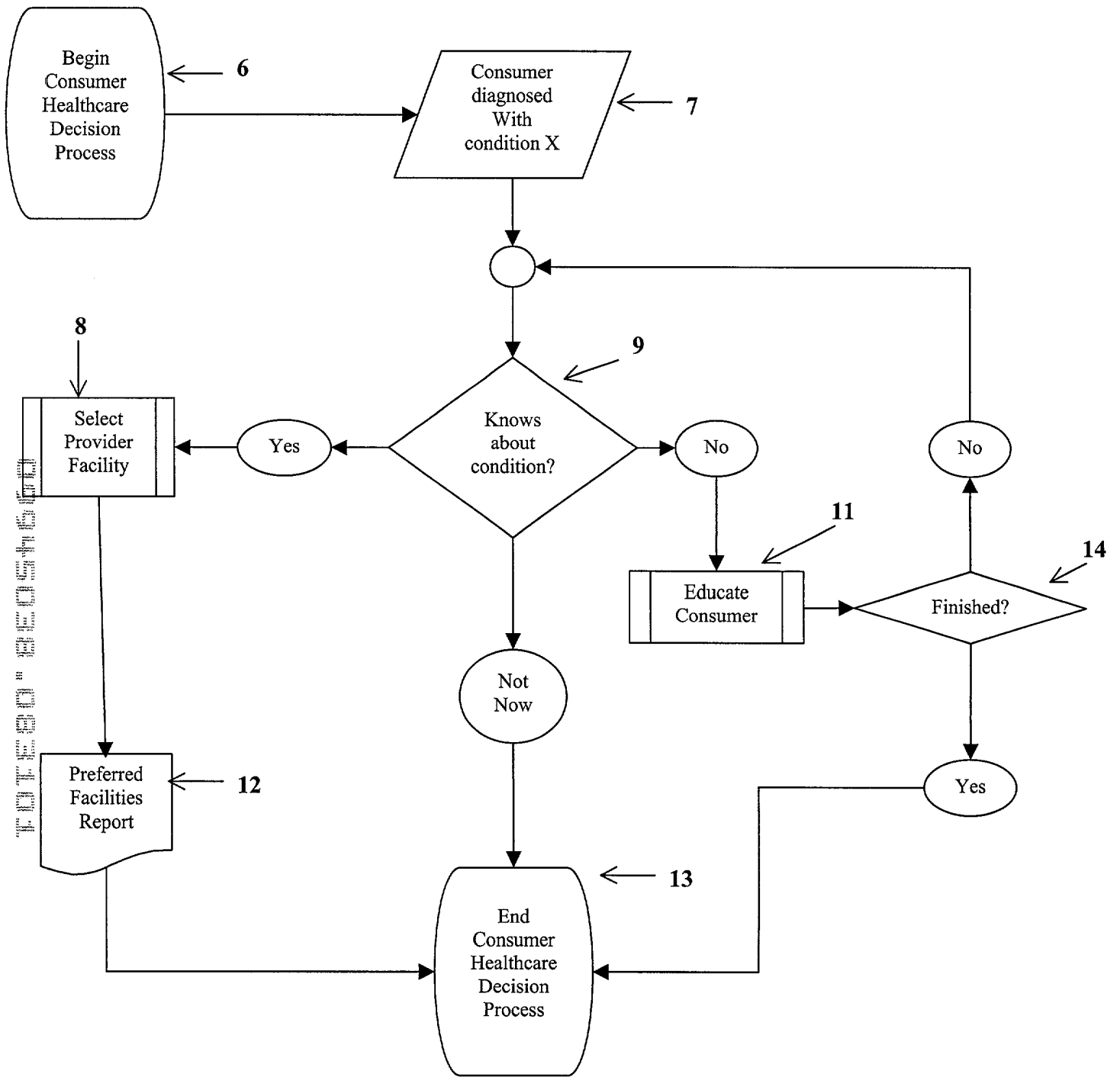


Figure 2

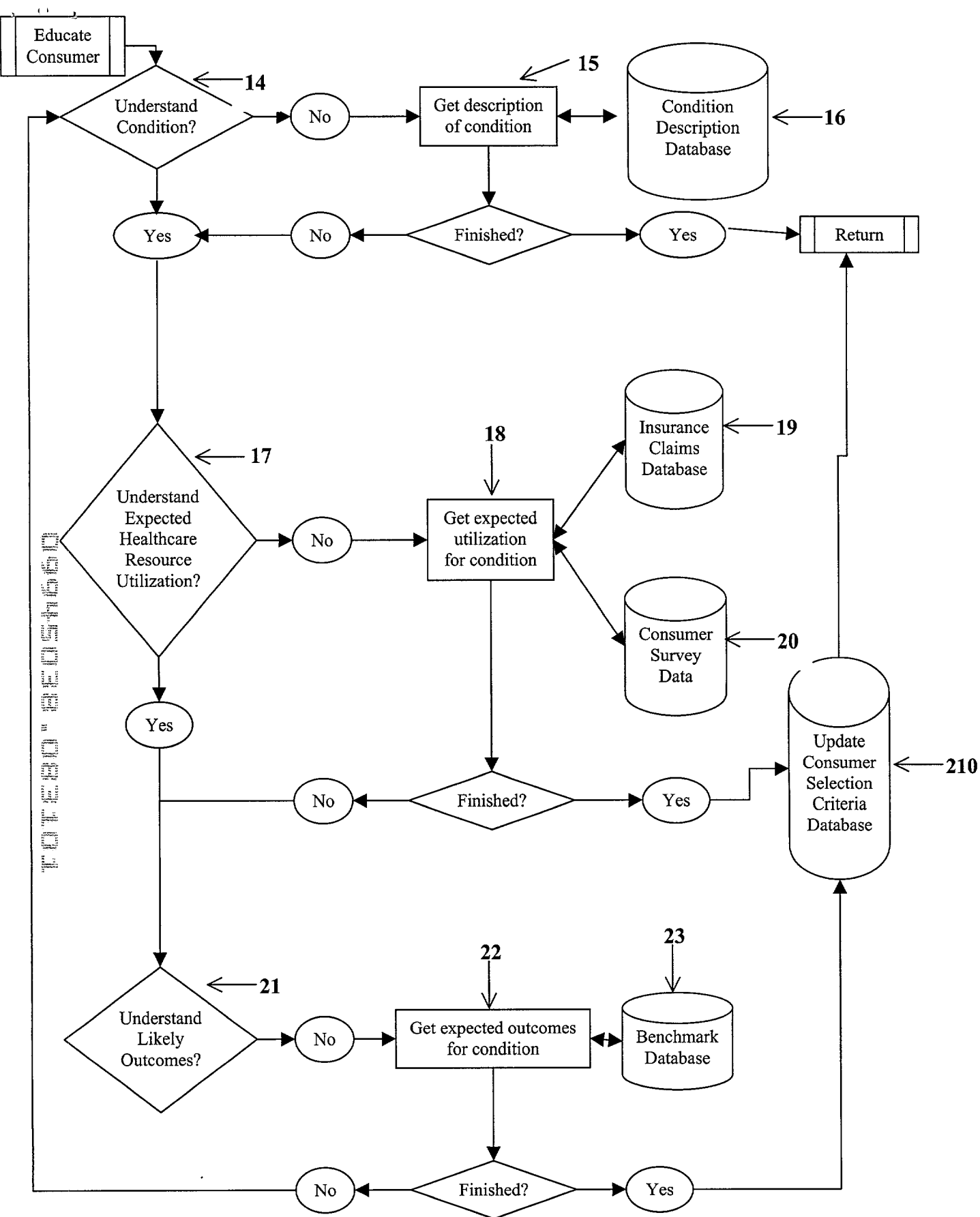


Figure 3

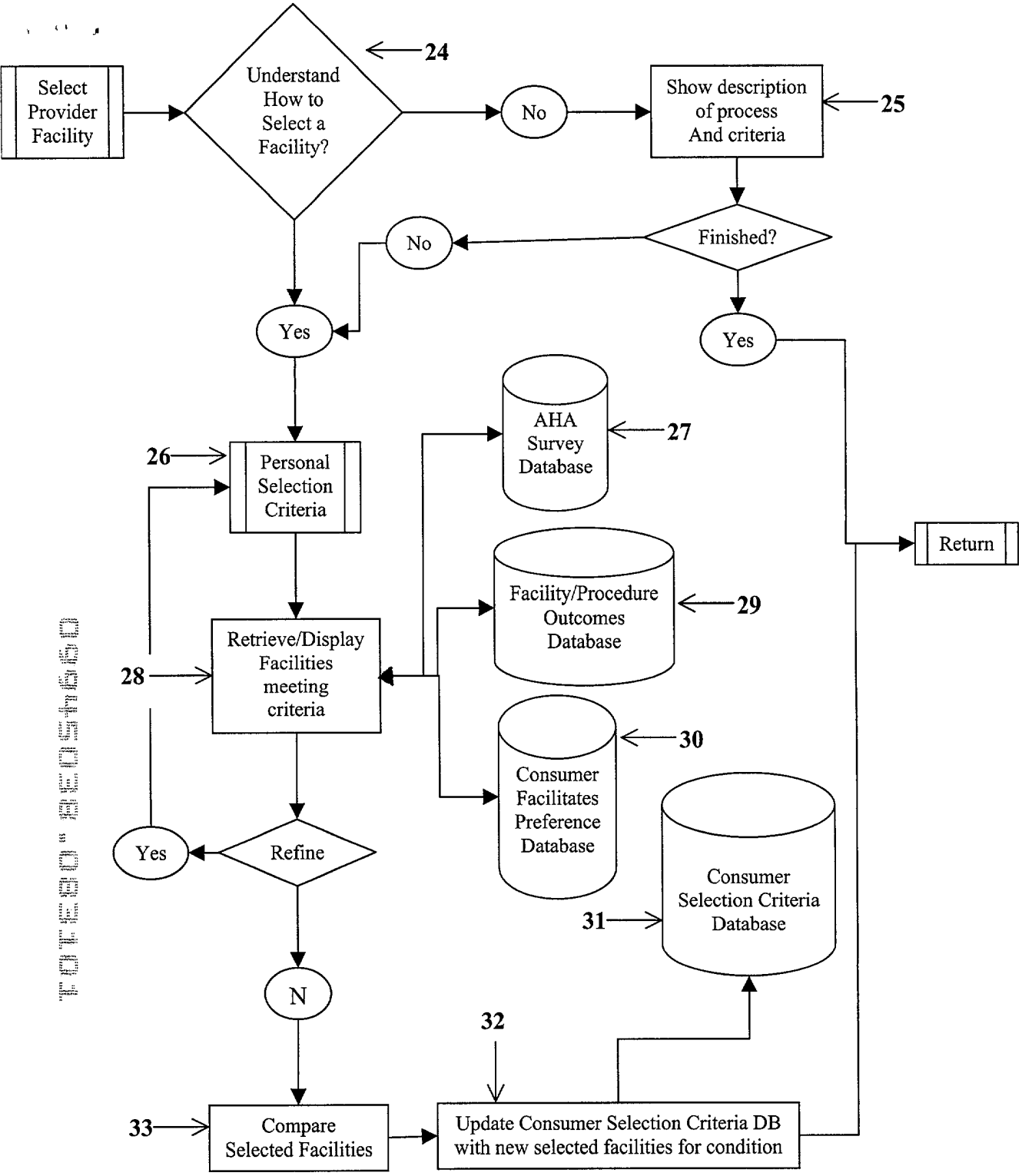
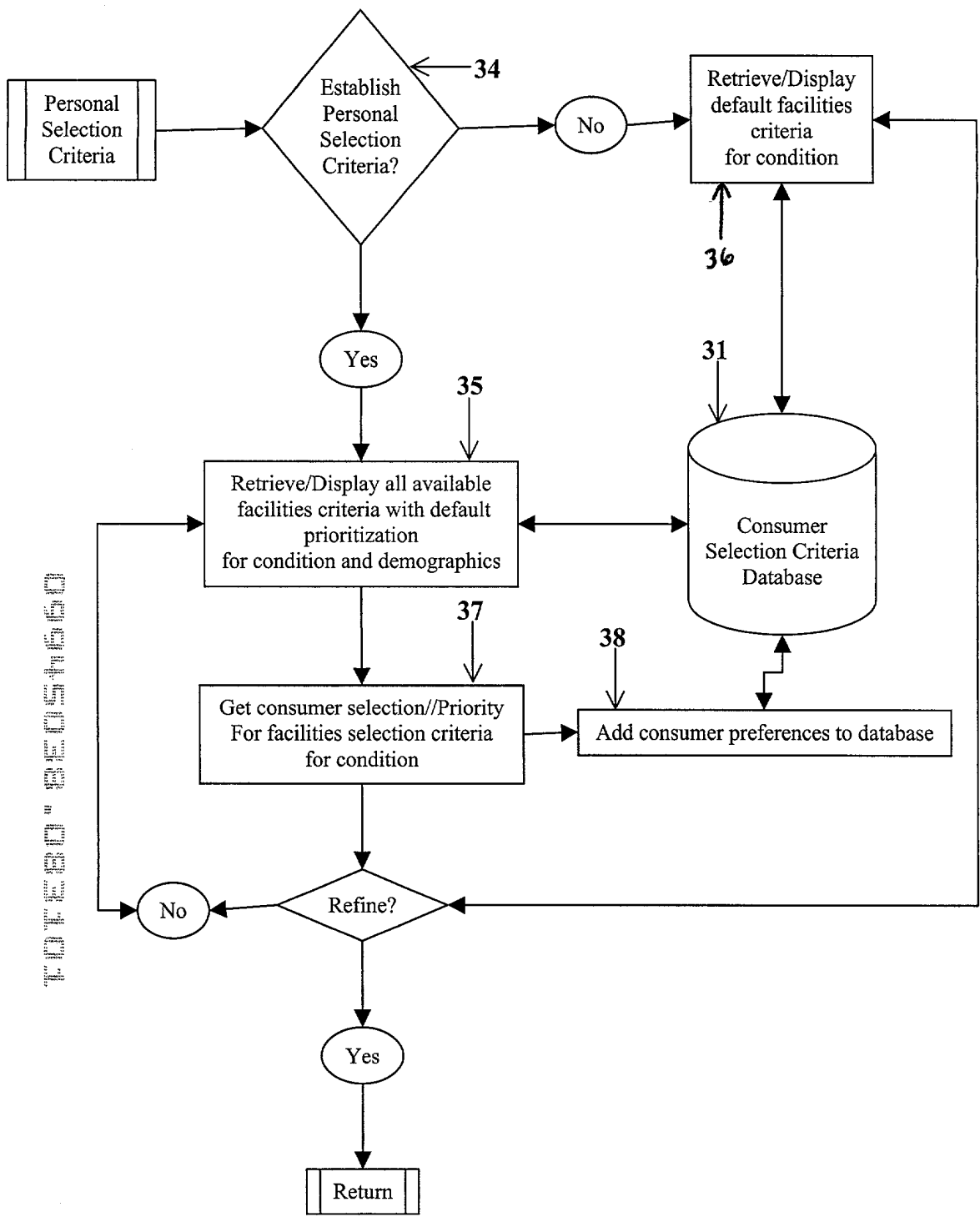


Figure 4



T.O.P.E.O. 8.05450

Figure 5

## Welcome!

You don't have to have a medical degree to understand health care and make good decisions for you and your family. You can take charge of your health care using the tools and resources provided here.

**First Time Visitor? [Start Here!](#)**

## Make a Decision

Navigate the decision-making process for key health decisions, such as managing a condition or preparing for a procedure.

### Manage a Condition

39 →

- [Diabetes Type I](#)
- [Diabetes Type II](#)
- [Lung Cancer](#)
- [Breast Cancer](#)
- [Hypertension](#)
- [Arrhythmia](#)
- [more conditions >>](#)

### Prepare for a Procedure

40 →

- [Gallbladder Removal](#)
- [Knee replacement](#)
- [Cataract surgery](#)
- [Hip replacement](#)
- [Valve Replacement](#)
- [Hysterectomy](#)
- [more procedures >>](#)

## Community

Ask questions and participate in discussions with others who have experience with your health care issues. Here's a sample of some of the current discussions.

- [Recovering from gallbladder surgery](#)
- [Problems with exercise](#)
- [Dealing with Diabetes of all types](#)
- [Explaining cancer to family](#)
- [Recovering from knee replacement](#)

## Resource Center

Access health care information, recommended websites, links to related decisions, and other good information, all organized by health care issue.

Figure 6

### Make a Decision about Knee Replacement

Take charge of your health care by following this simple process to make informed health care decisions based on what's important to you.

- **Get Smart** - Get background information and data on expectations.
- **Choose Care** - Identify options for receiving care and determine which are best for you.
- **Ask Others** - Connect with those who have experience with similar issues
- **Research Further** - Dig deeper into your health care issue, using additional information and links to key websites.

(We recommend following the process in order, but feel free to skip around if you wish by using the links in the Make a Decision box to your right.)

#### Make a Decision

1. >> [Get Smart](#) <<
2. [Choose Care](#)
3. [Ask Others](#)
4. [Research Further](#)

#### About you (optional)

Are you researching health care options for:

yourself  for someone else

#### About the Person Who Needs the Procedure

Age and sex are important factors in the use of health care services. To get the most relevant information for you, please provide some basic information about yourself (or the person for whom you are researching this procedure). Any information you provide here is treated as confidential. (Review our [privacy policy](#)). If you choose not to provide any information here, all results shown will be based on the whole population, rather than people like you. (Remember, if you are researching for someone else, be sure to put their information here.)

Age group:

Sex:  Female  Male

Zip Code:

or

City:

State:

[Next Step: Get Smart](#)

#### Ask Others

- [Recovering from surgery](#)
- [Problems with exercises](#)
- [Will I be able to run again?](#)
- [Choosing a good ortho surgeon](#)
- [Differences in implants](#)

#### Related Decisions

[Knee Arthroscopy and Repair](#)

Figure 7

## Get Smart about Knee Replacement Surgery

### What is it?

Knee replacement is surgery to remove the original knee joint and replace it with an artificial joint, which is usually made of metal. This procedure is usually done to relieve pain and improve knee functions in people who have extreme or chronic knee pain due to arthritis or injury.

[Learn more about how Knee Replacement Surgery is performed.](#)

### How Common is it?

About 315,000 knee replacements are done every year in the United States, usually on people over the age of 65. Knee replacement surgery is typically done in the hospital (inpatient). Most knee replacements (over 90%) are done for the first time, but sometimes a second surgery is needed, especially if the first knee implant is more than 10 years old.

Here are the average procedure rates for people like you. If you did not give us information about yourself, the rates are for the whole country.

Procedure Type	Where done	Percent of Population Having this Procedure*
Knee Replacement- 1st Surgery	Inpatient	0.50%
Knee Replacement- Revision	Inpatient	0.05%

\*Women Aged 65-69 in the Northeast. Source: HCIA-Sachs.

### What are my options?

Before having surgery, be sure you have considered all your options, both surgical and non-surgical. You may wish to discuss these with your doctor to ensure that you are making the right decision for you.

### What if I don't want surgery?

Depending on your condition, you may be able to avoid surgery, at least for a period of time, by doing one or more of the following:

- **Lifestyle** - Rest, exercise and/or physical therapy, or walking aids (canes, walkers) are all possible ways to deal with knee pain.
- **Drug Therapy** - Nonsteroidal anti-inflammatory medications (NSAIDs), such as ibuprofen, may help relieve pain from arthritis or knee injury. For more severe or prolonged pain, your doctor might recommend corticosteroid injections.
- **Alternative Therapy** - Acupuncture or massage therapy may help people with knee pain.

### Surgical Options

Again, depending on your condition, you may have several surgical options to address your knee problems.

- **Minimally-Invasive** - Arthroscopic surgery can be done to repair some knee problems, primarily those related to ligament and cartilage damage
- **Major Surgery** - Several different surgical procedures are possible, primarily knee replacement and revision replacement. Partial knee replacement, osteotomy, and cartilage grafting are done less frequently.

### Who performs the Procedure?

Knee replacement is nearly always done by an orthopedic surgeon (a physician who operates on the skeleton, muscles, and joints)

**[Next Step: Risks and Recovery](#)**

### Make a Decision

1. >> [Get Smart](#) <<

2. [Choose Care](#)

3. [Ask Others](#)

4. [Research Further](#)

### Ask Others

[Recovering from surgery](#)

[Problems with exercises](#)

[Will I be able to run again?](#)

[Choosing a good ortho surgeon](#)

[Differences in implants](#)

### Related Decisions

[Knee Arthroscopy and Repair](#)



## Get Smart about Knee Replacement

### What are My Risks?

Any major surgery has risks, such as reactions to the anesthesia, bleeding, or infection. Knee replacement surgery can also cause blood clots or infections from the artificial joint.

[Learn more about the risks associated with Knee Replacement Surgery.](#)

### What are the complication rates after this procedure?

Sometimes, patients develop complications in the hospital. Examples of complications include surgical instruments being left in the body or post-operative pneumonia. Here are average complication rates for people like you. If you did not give us information about yourself, the rates are averages the whole country.

Procedure Type	Where done	Percent of Procedures* resulting in Complications
Knee Replacement - 1st Surgery	Inpatient	4.5 %
Knee Replacement - Revision	Inpatient	6.8 %

\*For Women Aged 65-69 in the Northeast. Source: HCIA-Sachs.

### What are the infection rates after this procedure?

Sometimes patients develop infections in the hospital. Here are average infection rates after the procedure for people like you. If you did not give us information about yourself, the rates are for the whole country.

Procedure Type	Where done	Percent of Procedures* that resulted in Post-Op Infections
Knee Replacement - 1st Surgery	Inpatient	9.6 %
Knee Replacement - Revision	Inpatient	12.1 %

\*For Women Aged 65-69 in the Northeast. Source: HCIA-Sachs.

### How many people die in the hospital because of this procedure?

Sometimes patients die in the hospital after having this procedure. Here are death rates for people like you. If you did not give us information about yourself, the rates are averages for the whole country.

Procedure Type	Where done	Percent of Procedures resulting in Death
Knee Replacement - 1st Surgery	Inpatient	0.5 %
Knee Replacement - Revision	Inpatient	1.2 %

\*For Women Aged 65-69 in the Northeast. Source: HCIA-Sachs.

[more detail](#)

### What is the Recovery Process?

Knee replacement usually requires you to spend several days in the hospital following the surgery. Recovery from knee replacement surgery is typically aided by physical therapy, which usually starts while you are still in the hospital.

[Learn more about Recovery from Knee Replacement.](#)

### Make a Decision

1. >> [Get Smart](#) <<

2. [Choose Care](#)

3. [Ask Others](#)

4. [Research Further](#)

### Ask Others

[Recovering from surgery](#)  
[Problems with exercises](#)  
[Will I be able to run again?](#)  
[Choosing a good ortho surgeon](#)  
[Differences in implants](#)

### Related Decisions

[Knee Arthroscopy and Repair](#)

Figure 9a

### How many days will I be in the hospital?

Procedure Type	Where done	Days Spent in the Hospital*
Knee Replacement - 1st Surgery	Inpatient	5 days
Knee Replacement - Revision	Inpatient	6 days

\* For Women Aged 65-69 in the Northeast. Source: HClA-Sachs.

[more detail](#)

### What Else Should I Consider?

- Talk to your doctor to ensure that you are a good candidate for knee replacement.
- You may want to bring someone else with you to the doctor to help ask questions or write down answers.
- Rehabilitation is an important component of successful knee replacement. Discuss your rehab plan with your doctor prior to having surgery. Get recommendations for rehab specialists available to you, and talk with them in advance about what they recommend for the rehab process.
- Get a second opinion if you are not sure about your doctor's recommendations for surgery, or if a second opinion is required by your insurance company.
- [Checklist of questions to ask your doctor and insurance company.](#)

**Next Step: Choose a Hospital**

Figure 9b

### Choosing a Hospital: Knee Replacement

There are a lot of things to consider when you are choosing a hospital. In this section we give you a way to make the best decision for you, backed up with lots of information about what the options are. We encourage you to look at as much information as you can when you are making this decision. Your choices may be different for different procedures or conditions. Sometimes you'll want to know that the hospital has a lot of experience with your procedure or condition. Other times, it will be most important for the hospital to be close to where you live.

Tell us what's important to you and we'll show you the hospitals in your area that best fit your needs and preferences. Then you can decide which one is the best choice for you.

To help you get started, we have provided the recommendations of our panel of doctors as the starting choices. You can add to or change them as you wish. If you make changes and then want to start over with the original default selections, click the 'Reset Choices' button at the bottom of the page.

#### Clinical Quality and Experience

	Not Selected	How Important? (Not very -- Very!)		
<a href="#">Has performed the procedure numerous times</a>	<input type="radio"/>	<input type="radio"/>	<input type="radio"/>	<input checked="" type="radio"/>
<a href="#">Had few cases that end up having complications</a>	<input type="radio"/>	<input type="radio"/>	<input type="radio"/>	<input checked="" type="radio"/>
<a href="#">Had few cases that had infections after the procedure</a>	<input checked="" type="radio"/>	<input type="radio"/>	<input type="radio"/>	<input type="radio"/>

#### Hospital Reputation

<a href="#">Is preferred by consumers</a>	<input type="radio"/>	<input type="radio"/>	<input type="radio"/>	<input checked="" type="radio"/>
<a href="#">Is an accredited facility</a>	<input checked="" type="radio"/>	<input type="radio"/>	<input type="radio"/>	<input type="radio"/>

#### Hospital Characteristics

<a href="#">Is a teaching hospital</a>	<input checked="" type="radio"/>	<input type="radio"/>	<input type="radio"/>	<input type="radio"/>
<a href="#">Primarily treats children</a>	<input checked="" type="radio"/>	<input type="radio"/>	<input type="radio"/>	<input type="radio"/>
<a href="#">Has more technology available</a>	<input checked="" type="radio"/>	<input type="radio"/>	<input type="radio"/>	<input type="radio"/>
<a href="#">Has an intensive care unit especially for babies (NICU)</a>	<input checked="" type="radio"/>	<input type="radio"/>	<input type="radio"/>	<input type="radio"/>
<a href="#">Has a critical care unit especially for heart problems (CCU)</a>	<input checked="" type="radio"/>	<input type="radio"/>	<input type="radio"/>	<input type="radio"/>
<a href="#">Has an intensive care unit (ICU)</a>	<input checked="" type="radio"/>	<input type="radio"/>	<input type="radio"/>	<input type="radio"/>
Profit Status: Non-Profit <input type="radio"/> For-Profit <input type="radio"/>	<input checked="" type="radio"/>	<input type="radio"/>	<input type="radio"/>	<input type="radio"/>
Is within <input type="text" value="10"/> miles of where I am				

Next Step:

Or:

#### Make a Decision

1. >> [Get Smart](#) <<

2. [Choose Care](#)

3. [Ask Others](#)

4. [Research Further](#)

#### Ask Others

[Recovering from surgery](#)  
[Problems with exercises](#)  
[Will I be able to run again?](#)  
[Choosing a good ortho surgeon](#)  
[Differences in implants](#)

#### Related Decisions

[Knee Arthroscopy and Repair](#)

Figure 10

### Hospitals that are the best match for you

Here are the hospitals that best match the factors you said were important to you. The number next to the hospital's name indicates how well the hospital meets the factors you picked. Feel free to [revise your choices](#) if you'd like to do another search. Also, please read about [how our selection methodology works](#).

Click on the hospital's name to see more information about that hospital and its experience with your procedure. By checking the boxes to the left of a hospital's name, you can compare the detailed information for up to 3 hospitals at a time.

<input type="checkbox"/>	<a href="#">Chicago University Medical Center</a> <b>Fit: 90%</b> 12343 Mainstreetland Rd, Chicago, IL 89856 ( <a href="#">map it!</a> )	2.4 miles away	<a href="#">more info</a>
<input type="checkbox"/>	<a href="#">Chicago Community Hospital</a> <b>Fit: 85%</b> 128 West 54th, Chicago, IL 89856 ( <a href="#">map it!</a> )	2.4 miles away	<a href="#">more info</a>
<input type="checkbox"/>	<a href="#">All Saints' Hospital</a> <b>Fit: 70%</b> 8000 South 29th, Chicago, IL 89856 ( <a href="#">map it!</a> )	8 miles away	<a href="#">more info</a>

Compare Selected

**[Next Step: Ask Others](#)**

### Make a Decision

1. >> [Get Smart](#) <<
2. [Choose Care](#)
3. [Ask Others](#)
4. [Research Further](#)

### Ask Others

[Recovering from surgery](#)  
[Problems with exercises](#)  
[Will I be able to run again?](#)  
[Choosing a good ortho surgeon](#)  
[Differences in implants](#)

### Related Decisions

[Knee Arthroscopy and Repair](#)

Figure 11

**Compare Hospitals for Knee Replacement**

	<u>Chicago University Hospital</u>	<u>Chicago Community Hospital</u>	<u>All Saints Hospital</u>
<b>Grade Based on Criteria</b>	90%	85%	70%
<b>Preferred by Inpatient Consumers</b>	Above Average	Average	Above Average
<b>Preferred by Outpatient Consumers</b>	Yes	Yes	Yes
<b>Facility Accreditation</b>	JCAHO	JCAHO	JCAHO
<b>Type of Facility</b>	Teaching Hospital		Teaching Hospital
<b>Latest Technology Available</b>	Yes	Yes	Yes
<b>Specialty Units Available</b>	ICU, CICU	ICU	NICU, ICU
<b>Profit Status</b>	Non-Profit	For-Profit	Non-Profit

**Knee Replacement: Inpatient**

<b>Procedures Performed</b>	776	306	432
<b>Complication Rate</b>	Average	Average	Below Average
<b>Severe Cases</b>	12	19	16
<b>Post-Op Infection Rate</b>	Above Average	Average	Average

**Related Procedure: Arthroscopy**

<b>Procedures Performed</b>	306*	876	301
<b>Complication Rate</b>	Average*	Average	Below Average
<b>Severe Cases</b>	12*	65	32
<b>Post-Op Infection Rate</b>	Average*	Below Average	Average

\* Information available from [Medicare Only](#)

[<< Back to Best Fit Results](#)

**[Next Step: Ask Others](#)**

**Make a Decision**

**1. >> [Get Smart](#) <<**

2. [Choose Care](#)

3. [Ask Others](#)

4. [Research Further](#)

**Ask Others**

- [Recovering from surgery](#)
- [Problems with exercises](#)
- [Will I be able to run again?](#)
- [Choosing a good ortho surgeon](#)
- [Differences in implants](#)

**Related Decisions**

[Knee Arthroscopy and Repair](#)

FOR THE "BEST FIT" 606050

Figure 12

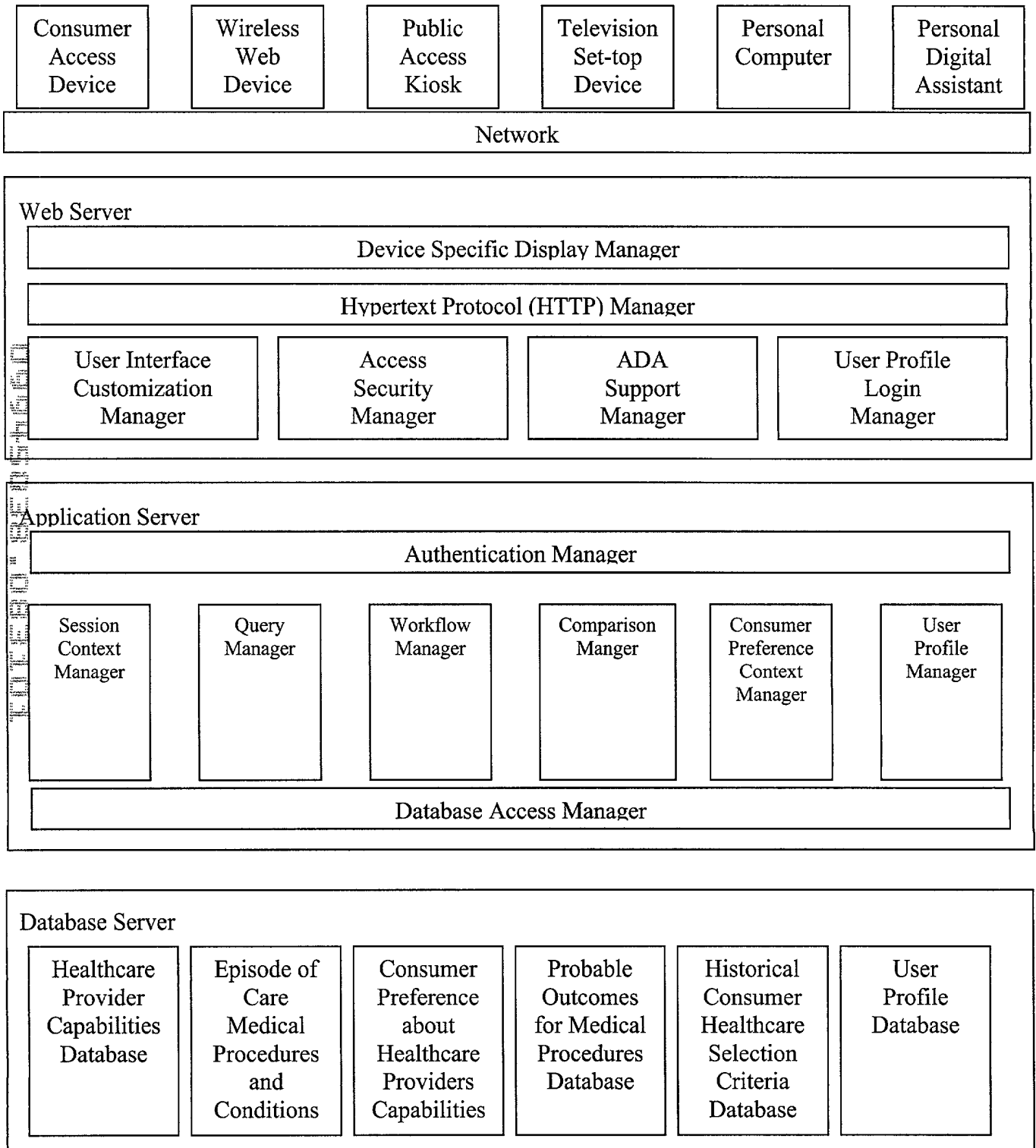


Figure 13

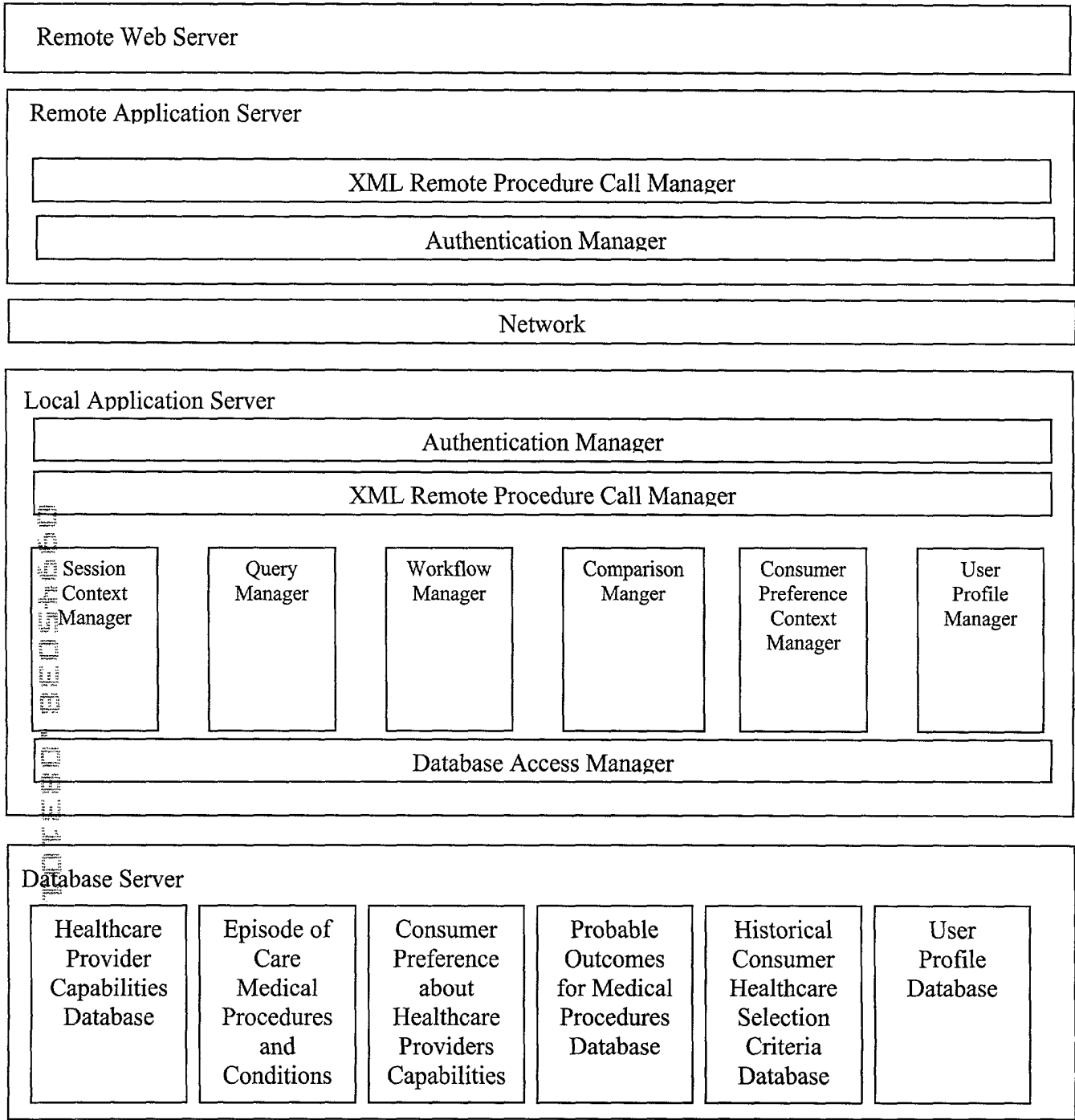


Figure 14